

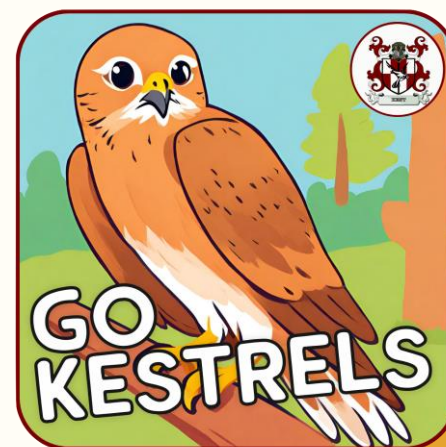
Season 5 Week 15

HOUSE MATTERS CHAMPIONSHIP



Beginning Monday 29th January,
lunchtime in the Sports Hall...

'Keepy-up' challenge



HOUSE MATTERS

UPCOMING
EVENTS



'Keepy-up' Lunch slots as follows...



Monday 29th Jan = Year 7

Tuesday 30th Jan = Year 8

Wednesday 31st Jan = Year 9

Thursday 1st Feb = Year 10

Friday 2nd Feb = Year 11



SELWELL

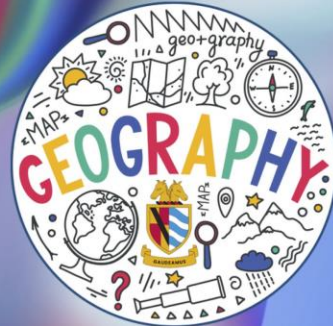
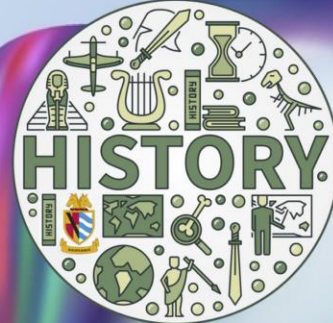
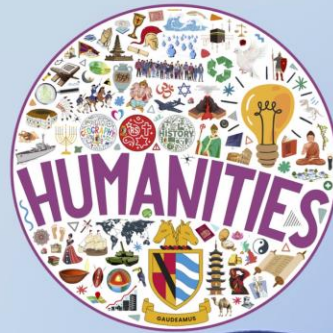


HUMANITIES HOUSE PHOTO COMPETITION

We are looking for photos that focus on **humanities**; this should include the **history** 🏰, **geography** 🌍, or **religious practices** 🏛️ of the communities in Nantwich & beyond.

The photos (max 5 per student) should inspire others to explore our fabulous local area & all it has to offer.

PLEASE SUBMIT VIA THE ASSIGNMENT ON YOUR YEAR GROUP TEAMS OR SEND THEM TO MR. OLIVER VIA THE TEAMS CHAT.

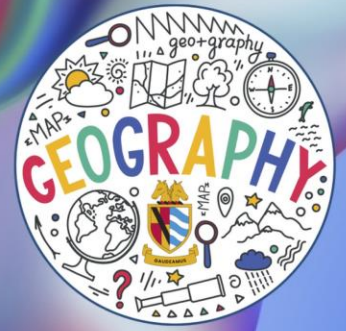
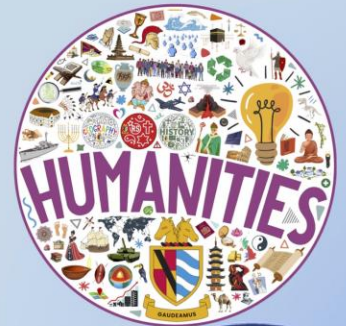


S
D
C
O
L

HUMANITIES HOUSE PHOTO COMPETITION 2023



Last years fantastic winning photograph and runners-up entries.



House Pebble Painting Challenge

Join us in Art every Monday during lunch
& let your creativity shine as you
personalise your own pebble or sea shell.
There are prizes & House points to win.
Everyone is welcome!



House Pebble Painting Challenge



Culture corner

MALBANKMFL



House Challenge 5: The results!

MALBANK XP Challenge: week 1

- 1st **Wilbraham** – 4 participants- 4 points
- 2nd **Dorfold**- 3 participants– 3 points
- 2nd **Kent** – 3 participants – 3 points
- 3rd **Brereton**- 2 participants – 3 points

MALBANK XP challenge: Bonus individual leaderboard

1st Mrs Machin

2nd Ava Laycock 8MMI

3rd Chloe Mcleod 11LAB

1 bonus point each for Wilbraham, Dorfold and Kent



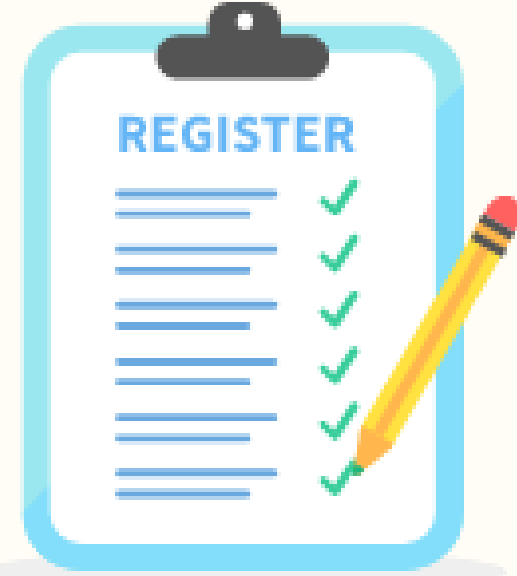
Attendance Cup Week 15

Brereton: = 2 points

Dorfold: = 3 points

Kent: = 1 point

Wilbraham: = 4 points



House Stars Week 15

Bears 33 = 1 point

Dorfold 45 = 3 points

Kent 57 = 4 points

Wilbraham 44 = 2 points



Making the 60 Matter Week 15

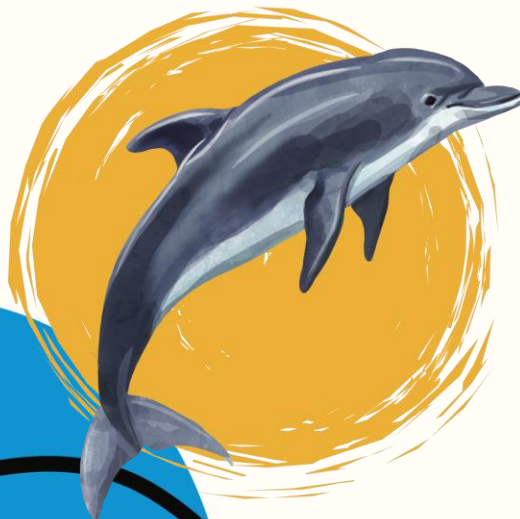
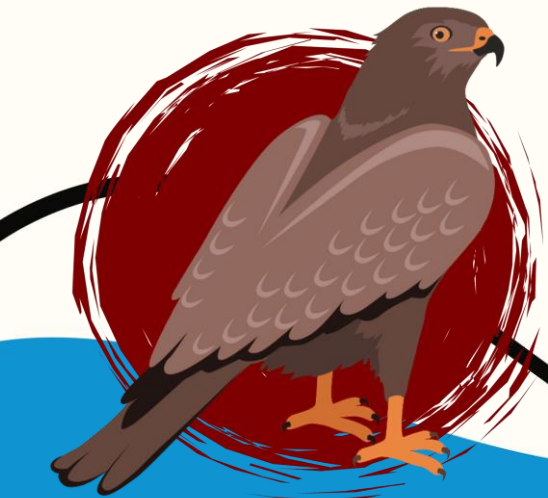


Brereton 8547 = 3 points

Dorfold 8351 = 2 points

Kent 8325 = 1 point

Wilbraham 8645 = 4 points



HOUSE MATTERS

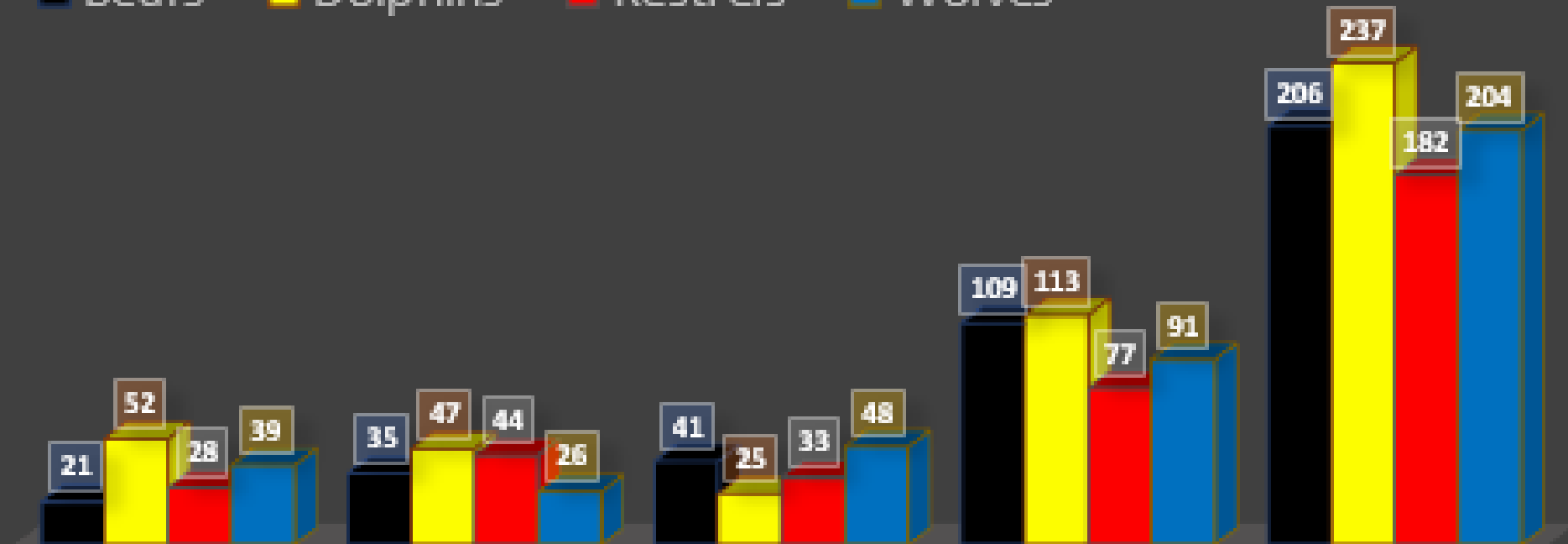


POSITION	HOUSE	POINTS
FIRST 1 st	Dorfold Dolphins 	237
SECOND 2 nd	Brereton Bears 	206
THIRD 3 rd	Wilbraham Wolves 	204
FOURTH 4 th	Kent Kestrels 	182



CHAMPIONSHIP

Bears
 Dolphins
 Kestrels
 Wolves



	Attendance	House Stars	Make 60 Matter	Special Events	Total
 Bears	21	35	41	109	206
 Dolphins	52	47	25	113	237
 Kestrels	28	44	33	77	182
 Wolves	39	26	48	91	204