

## Extra opportunities

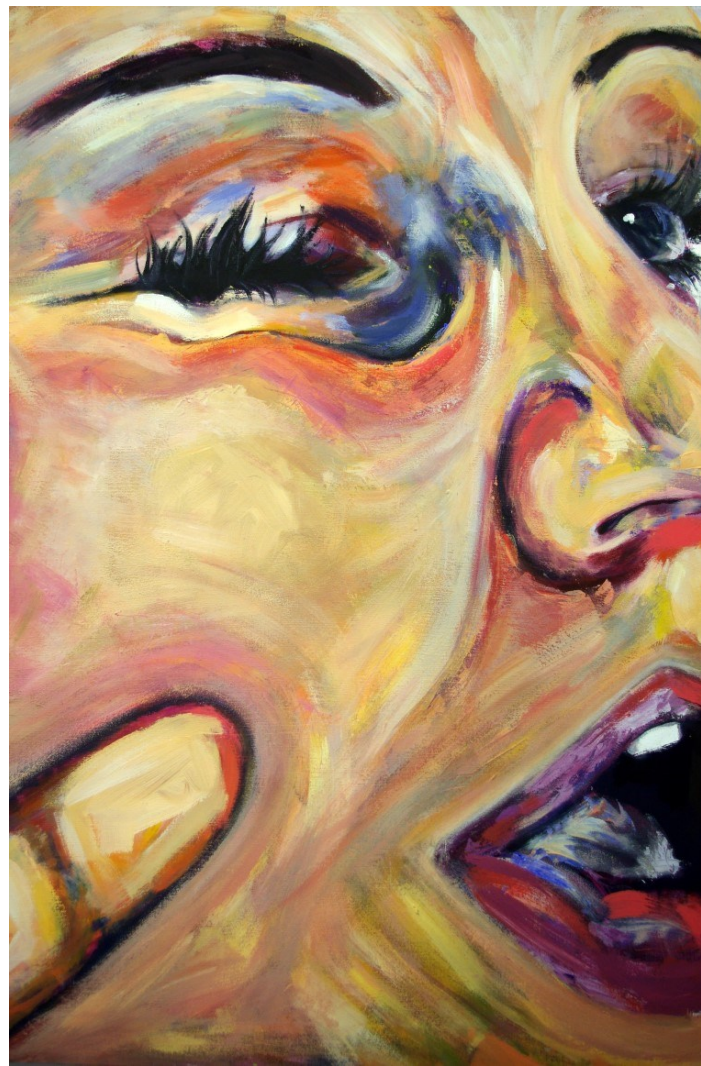
When restrictions allow we also offer the opportunity to travel to Italy during October half term break for 5-6 days. We study architecture, surrounding landscapes, the variety of art work accessible to us, both contemporary and historical within the many Venetian galleries and museums.

Which other subjects link well with Art and Design?

Due to the creative nature of Art & Design many students select similar courses such as Textiles technology, Product design, Media studies, Performing Arts, Drama. English, History and humanities subjects also link in well with Art and Design.

What career paths would this course lead to?

There are many career paths available to students who study Art and Design such as, a Fine Artist, Fashion Designer, Stage set designer, costume design, art historians, gallery/exhibition curators, Film/ TV set designer, Interior Designer and Art teachers.



For further information about the course  
please see the school website [Malbank.com](http://Malbank.com)

or contact

Mrs Mason-Bernardi  
[mem@malbank.cheshire.sch.uk](mailto:mem@malbank.cheshire.sch.uk)





## About the course

We follow the AQA Art, Craft and Design specification.

This is a broad-based course exploring practical and contextual work through a range of 2D and 3D processes. During the course students are introduced to a wide variety of experiences providing them with opportunities to develop skills and understanding in:

Drawing

Painting

Mixed media

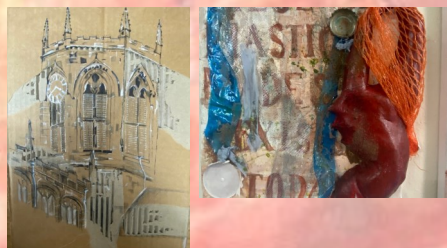
Textiles

Printmaking

Photography

Digital art

3D form



## Why study this course?

Art and Design at A-level is a well-established course at Malbank Sixth form College. Indeed, the department was ranked 2nd in the entire country in 2012 regarding students over performing against targets since then the Art department has maintained high standards with 100% of students achieving A\*-C grades every single year with a proven track record of students achieving top A and A\* grades. All staff within the department are trained specialists across a wide range of specialisms including Textiles, Painting, Graphic Design and Art History.

The A level course is divided between 2 components.  
Coursework and an externally set exam.

## Coursework Portfolio

### *Foundation Project*

During the first half term, year 12 students will complete a foundation project during which they will explore and develop a range of practical and technical skills inspired by a chosen theme.

### *Component 1: 60% (96 Marks)*

Students will conduct a practical investigation using their own project brief based on an idea, issue, concept or theme of their choice, supported by written material. The investigation will be led by the student with support from teaching staff in ensuring assessment objectives have been met. The investigation completing a finished outcome or a series of related finished outcomes.

## Externally Set Assignment

### *Component 2: 40% (96 Marks)*

On 1st February of the second year, students are asked to select one question from an externally set paper and from this date prepare research material, photographs and drawings, as well as experimental work during the months of January, February and March in lessons and at home. At the end of the preparatory period students will sit a 15 hour supervised period in which they must complete a final outcome for this externally set assignment component.

## Our Aims

Our aims within the Art department are to provide varied and exciting opportunities that allow and encourage all students to develop their intellectual, imaginative and creative capabilities.

We provide students with support and guidance to aid their analytical, experimental, expressive and technical skills. We encourage independence of mind and reflective thinking.

Through the A-Level course we embed an enthusiasm for and enjoyment of art, craft and design.

## Entry requirements

The minimum requirement is a level 4 at GCSE in any Art & Design course or evidence of the equivalent in an accomplished portfolio.

What we look for in our students is an enjoyment of the subject; resilience, creativity, independence and a great work ethic.

## Department facilities

We have two recently refurbished teaching studios, textiles and printing facilities, a computer and photography suite, and a designated 6<sup>th</sup> form studio space where students can continue with project work outside of the normal timetabled lessons.

